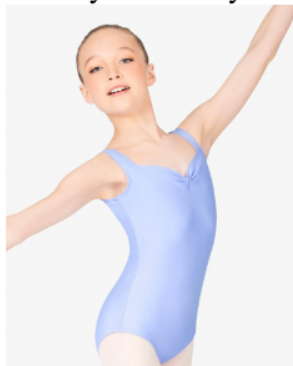


LEVEL 2&3 Classes (Support) Required Attire for Class

Monday or Tuesday Level 2&3 Classes



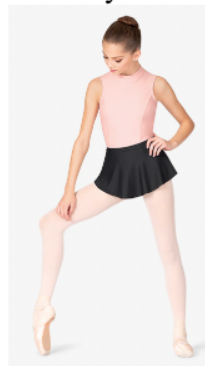
MARIIA CROWN

Women or Girls Pinch Front Tank Leotard

Style No: ME630 (Women) ME630C (Child Size)

COLOR Light BLUE

Thursday Level 2&3 Classes



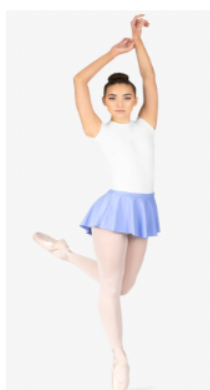
MARIIA CROWN

Women or Girls High Low Pull-On Skirt

Style No: ME635 (Women)

Style No: ME635C (Child Size)

COLOR BLACK



MARIIA CROWN ♥

Women or Girls High Low Pull-On Skirt

Style No: ME635 (Women)

Style No: ME635C (Child Size)

COLOR Light BLUE



MARIIA CROWN

Women or Girls Pinch Front Tank
Leotard

Style No: ME630 (Women) ME630C (Child Size)

COLOR BLACK

Ballet and Pre-Pointe Class Pink Tights (Seamed or Mock seamed for performance)

Ballet shoes, must be Full-Sole, leather.

Tap Shoes are the Tan Mary Jane style shoe

Jazz Shoes Tan Slip-on or lace up. Jazz students may wear black tights, but no shorts or t-shirts during class.



Any warm-ups must be “Dance Warm-ups” and must be removed when instructed to do so.
The last class of each month, dancers may wear their favorite leotard and skirt.