

LEVEL 4 Classes (Apprentices) Required Attire for Class

Tuesday Level 4 Classes



MARIIA CROWN

Women or Girls Pinch Front Tank Leotard

Style No: ME630 (Women) ME630C (Child Size)

COLOR BLUE



MARIIA CROWN 

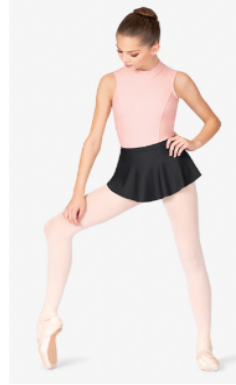
Women or Girls High Low Pull-On Skirt

Style No: ME635 (Women)

Style No: ME635C (Child Size)

COLOR BLU

Thursday Level 4 Classes



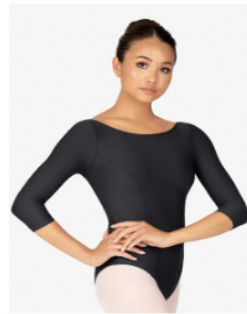
MARIIA CROWN

Women or Girls High Low Pull-On Skirt

Style No: ME635 (Women)

Style No: ME635C (Child Size)

COLOR BLACK



MARIIA CROWN

Women Boat Neck 3/4 Sleeve Leotard

Style No: ME634 (Adult size)

Style No: ME634C (Child Size)

COLOR BLACK

Ballet and Pointe Class Pink Tights (Seamed or Mock seamed for performance)

Ballet shoes, must be leather for performance, canvas for class is permissible.

Pointe Shoes-We RECOMMEND AND ENCOURAGE you get a proper fit and purchase at

Dance Etc. in Raleigh, NC (ONLY WHEN told by their instructor that they are ready for Pointe shoes!)

Modern Class-they may wear long or short sleeve, snug fitting shirt and black tights. Socks are recommended for some of the technique.

Tap Shoes are the black oxfords (slip on or lace up are acceptable.) They may wear black tights, shorts or t-shirts (that are appropriate for dance).

Jazz Shoes Tan Slip-on or lace up. Jazz students may wear black tights, but no shorts or t-shirts during class.



Any warm-ups must be "Dance Warm-ups" and must be removed when instructed to do so. Dancers may wear any black leotard on Thursday, but must own the ¾ sleeve for performances or special lessons and showcases or pictures. The last class of each month, dancers may wear their favorite leotard and skirt.