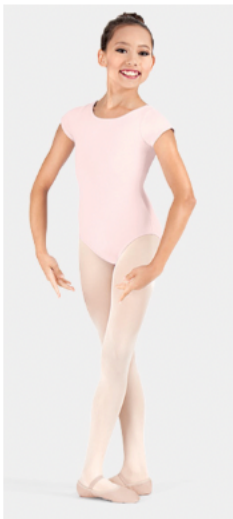


## LEVEL 1 and Pre-Dance Classes (Pre-Support and Pre-Dance) Required Attire for Class



### Light Pink Short Sleeve Leotard (Suggested brands are

**BLOCH** ♥

Girls Essential Short Sleeve Leotard

Style No: CL5602

Or

**THEATRICALS**

Child Short Sleeve Dance Leotard

Style No: D5102C



### Light Pink Ballet pull-on Skirt

(Suggested brands...

**LA PETITE BALLERINA**

Girls Mesh Pull-On Skirt

Style No: C28484

Or

**BALTOGS**

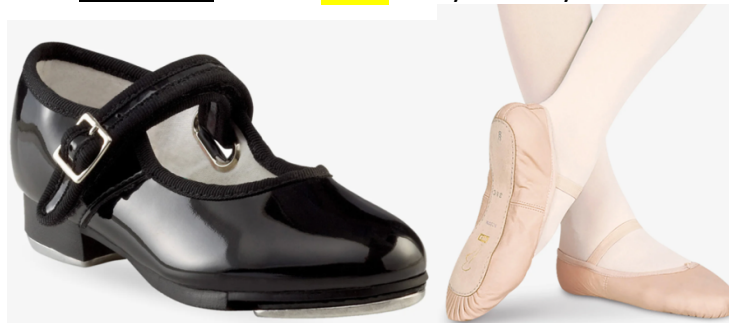
Girls Pull-On Mesh Skirt

Style No: M777C

**Ballet and Pre-Dance Class** Pink Tights (Seamed or Mock seamed for performance)

Ballet shoes, must be Full-Sole, leather.

**Tap Shoes** are the **Black** Mary Jane style shoe

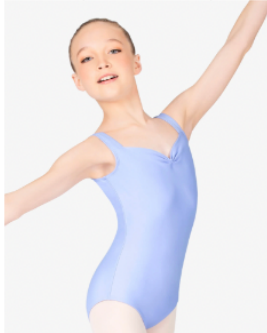


Any warm-ups must be "Dance Warm-ups" and must be removed when instructed to do so.

The last class of each month, dancers may wear their favorite leotard and skirt.

## LEVEL 2&3 Classes (Support) Required Attire for Class

Monday or Tuesday Level 2&3 Classes



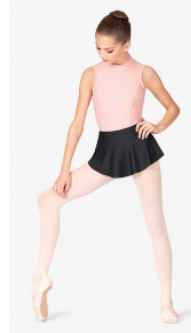
**MARIIA CROWN**

Women or Girls Pinch Front Tank Leotard

Style No: ME630 (Women) ME630C (Child Size)

COLOR Light BLUE

Thursday Level 2&3 Classes



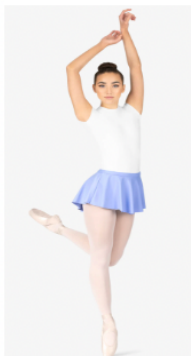
**MARIIA CROWN**

Women or Girls High Low Pull-On Skirt

Style No: ME635 (Women)

Style No: ME635C (Child Size)

COLOR BLACK



**MARIIA CROWN** ♥

Women or Girls High Low Pull-On Skirt

Style No: ME635 (Women)

Style No: ME635C (Child Size)

COLOR Light BLUE



**MARIIA CROWN**

Women or Girls Pinch Front Tank  
Leotard

Style No: ME630 (Women) ME630C (Child Size)

COLOR BLACK

**Ballet and Pre-Pointe Class** Pink Tights (Seamed or Mock seamed for performance)

Ballet shoes, must be Full-Sole, leather.

**Tap Shoes** are the **Tan** Mary Jane style shoe

**Jazz Shoes** Tan Slip-on or lace up. Jazz students may wear black tights, but no shorts or t-shirts during class.



Any warm-ups must be "Dance Warm-ups" and must be removed when instructed to do so.

The last class of each month, dancers may wear their favorite leotard and skirt.

## LEVEL 4 Classes (Apprentices) Required Attire for Class

### Tuesday Level 4 Classes

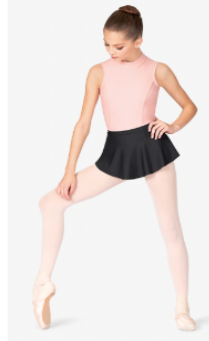


**MARIIA CROWN**  
Women or Girls Pinch Front Tank Leotard  
Style No: ME630 (Women) ME630C (Child Size)  
COLOR BLUE

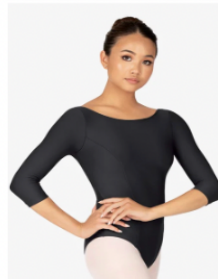


**MARIIA CROWN** ♥  
Women or Girls High Low Pull-On Skirt  
Style No: ME635 (Women)  
Style No: ME635C (Child Size)  
COLOR BLU

### Thursday Level 4 Classes



**MARIIA CROWN**  
Women or Girls High Low Pull-On Skirt  
Style No: ME635 (Women)  
Style No: ME635C (Child Size)  
COLOR BLACK



**MARIIA CROWN**  
Women Boat Neck 3/4 Sleeve Leotard  
Style No: ME634 (Adult size)  
Style No: ME634C (Child Size)  
COLOR BLACK

**Ballet and Pointe Class** Pink Tights (Seamed or Mock seamed for performance)

Ballet shoes, must be leather for performance, canvas for class is permissible.

Pointe Shoes-We RECOMMEND AND ENCOURAGE you get a proper fit and purchase at

Dance Etc. in Raleigh, NC (ONLY WHEN told by their instructor that they are ready for Pointe shoes!)

**Modern Class**-they may wear long or short sleeve, snug fitting shirt and black tights. Socks are recommended for some of the technique.

**Tap Shoes** are the black oxfords (slip on or lace up are acceptable.) They may wear black tights, shorts or t-shirts (that are appropriate for dance).

**Jazz Shoes** Tan Slip-on or lace up. Jazz students may wear black tights, but no shorts or t-shirts during class.



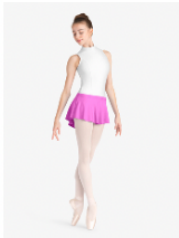
Any warm-ups must be "Dance Warm-ups" and must be removed when instructed to do so. Dancers may wear any black leotard on Thursday, but must own the ¾ sleeve for performances or special lessons and showcases or pictures. The last class of each month, dancers may wear their favorite leotard and skirt.

## LEVEL 5 Classes (Company) Required Attire for Class

### Monday Level 5 Classes

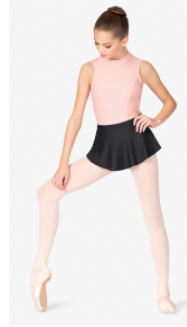


**MARIIA CROWN**  
Women or Girls Pinch Front Tank Leotard  
Style No: ME630 (Women) ME630C (Child Size)  
COLOR MAUVE

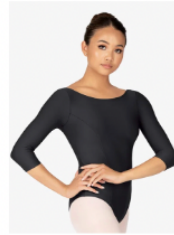


**MARIIA CROWN** ♥  
Women or Girls High Low Pull-On Skirt  
Style No: ME635 (Women)  
Style No: ME635C (Child Size)  
COLOR MAUVE

### Wednesday Level 5 Classes



**MARIIA CROWN**  
Women or Girls High Low Pull-On Skirt  
Style No: ME635 (Women)  
Style No: ME635C (Child Size)  
COLOR BLACK



**MARIIA CROWN**  
Women Boat Neck 3/4 Sleeve Leotard  
Style No: ME634 (Adult size)  
Style No: ME634C (Child Size)  
COLOR BLACK

**Ballet and Pointe Class** Pink Tights (Seamed or Mock seamed for performance)

Ballet shoes, must be leather for performance, canvas for class is permissible.

Pointe Shoes-We RECOMMEND AND ENCOURAGE you get a proper fit and purchase at Dance Etc. in Raleigh, NC

**Modern Class**-they may wear long or short sleeve, snug fitting shirt and black tights. Socks are recommended for some of the technique.

**Tap Shoes** are the black oxfords (slip on or lace up are acceptable.) They may wear black tights, shorts or t-shirts (that are appropriate for dance).

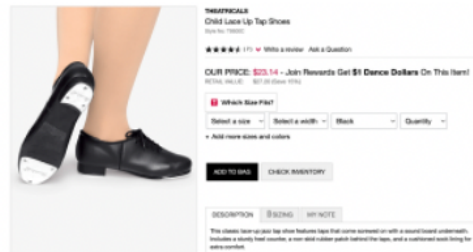
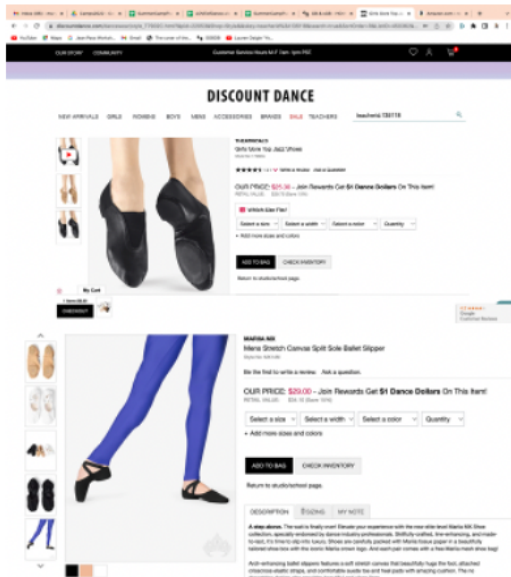
**Jazz Shoes** Tan Slip-on or lace up. Jazz students may wear black tights, but no shorts or t-shirts during class.



Any warm-ups must be "Dance Warm-ups" and must be removed when instructed to do so. Dancers may wear any black leotard on Wednesday, but must own the ¾ sleeve for performances or special lessons and showcases or pictures. The last class of each month, dancers may wear their favorite leotard and skirt.

## Boys. Required Attire for Class

Black Pants or Shorts with a Black or White Tshirt



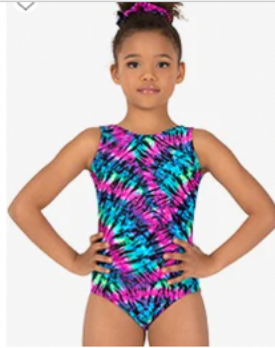
Ballet, Tap and Jazz shoes should be Black, here is are examples of good styles

## Gymnastics Attire

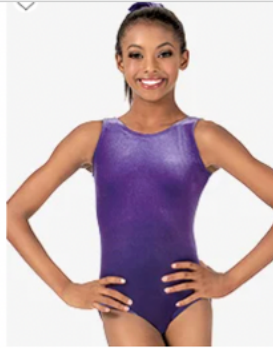
Students must wear athletic ware that they can go upside down in and the clothes **DO NOT** come up. Leotard and shorts, leotard and athletic leggings, a “bike short” style unitard, or a unitard are all acceptable.



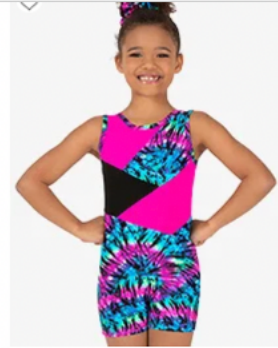
Perfect Balance Girls Gymnastics  
Glitter Print Tank Shorty Unitard  
\$26.51



Perfect Balance Girls Gymnastics  
Neon Tie-Dye Tank Leotard  
\$34.01



Perfect Balance Child Basic Velvet  
Tank Leotard  
\$23.03



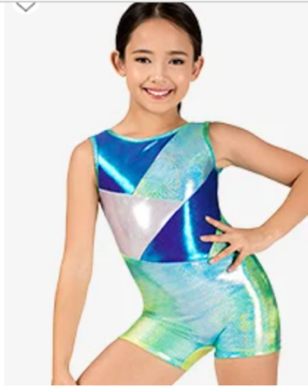
Perfect Balance Girls Gymnastics  
Neon Tie-Dye Tank Shorty Unitard  
\$41.40



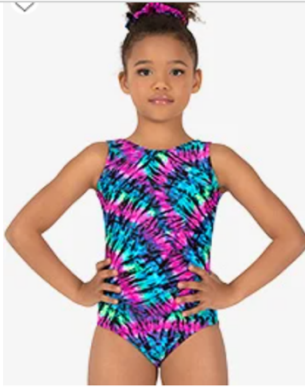
Mariia Crown Womens Pinch Front  
Tank Biketard  
\$34.50

## **Gymnastics Attire**

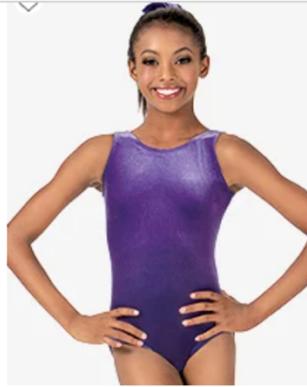
**Students must wear athletic ware that they can go upside down in and the clothes DO NOT come up. Leotard and shorts, leotard and athletic leggings, a “bike short” style unitard, or a unitard are all acceptable.**



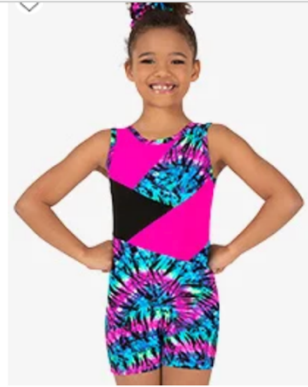
Perfect Balance Girls Gymnastics  
Glitter Print Tank Shorty Unitard  
**\$26.51**



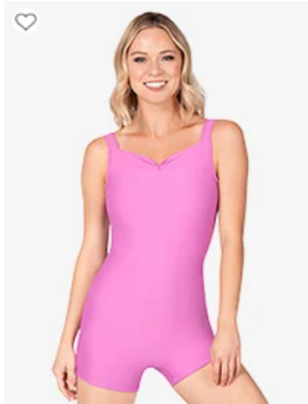
Perfect Balance Girls Gymnastics  
Neon Tie-Dye Tank Leotard  
**\$34.01**



Perfect Balance Child Basic Velvet  
Tank Leotard  
**\$23.03**



Perfect Balance Girls Gymnastics  
Neon Tie-Dye Tank Shorty Unitard  
**\$41.40**



Maria Crown Womens Pinch Front  
Tank Biketard  
**\$34.50**