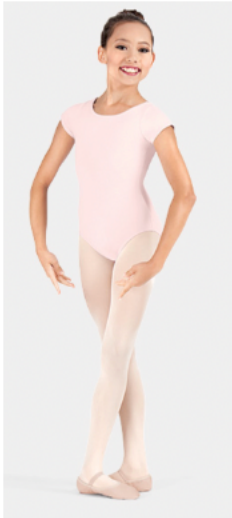


LEVEL 1 and Pre-Dance Classes (Pre-Support and Pre-Dance) Required Attire for Class



Light Pink Short Sleeve Leotard (Suggested brands are

BLOCH ♥

Girls Essential Short Sleeve Leotard

Style No: CL5602

Or

THEATRICALS

Child Short Sleeve Dance Leotard

Style No: D5102C



Light Pink Ballet pull-on Skirt

(Suggested brands...

LA PETITE BALLERINA

Girls Mesh Pull-On Skirt

Style No: C28484

Or

BALTOGS

Girls Pull-On Mesh Skirt

Style No: M777C

Ballet and Pre-Dance Class Pink Tights

Ballet shoes, must be Full-Sole, leather.

Tap Shoes are the **Black** Mary Jane style shoe



Any warm-ups must be "Dance Warm-ups" and must be removed when instructed to do so.

The last class of each month, dancers may wear their favorite leotard and skirt.

LEVEL 2&3 Classes (Support)
Required Attire for Class



Monday/Tuesday Classes

LEOTARD: LAVENDER

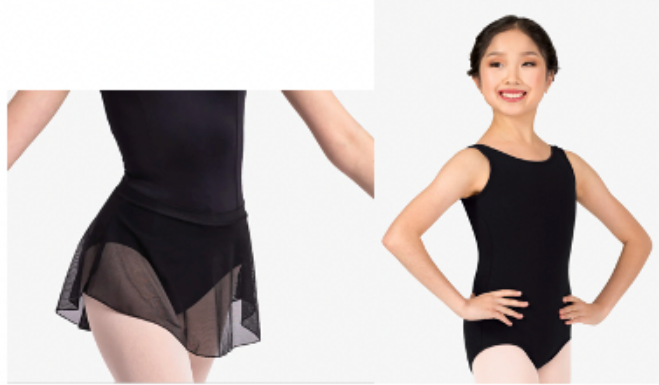
Theatrical Girls Cotton Tank Dance
Leotard

Style No: TH5512C

Or WOMEN'S Theatrical Womens
Scoop Tank Dance Leotard

Style No: D5101

SKIRT: LAVENDER Theatrical Girls
Economy Pull-On Mesh Ballet Style
No: TH5513C



Thursday/Tuesday Classes

LEOTARD: BLACK

Theatrical Girls Cotton Tank Dance
Leotard

Style No: TH5512C

Or WOMEN'S Scoop Tank Dance
Leotard Style No: D5101

SKIRT: BLACK

SO DANCA irls "Maria" Mesh Skirt
Style No: TP11

Ballet and Pre-Pointe Class Pink Tights (Seamed or Mock seamed for performance)

Ballet shoes, must be Full-Sole, leather.

Tap Shoes are the **Tan** Mary Jane style shoe

Jazz Shoes Tan Slip-on or lace up. Jazz students may wear black tights, but no shorts or t-shirts during class.



Any warm-ups must be "Dance Warm-ups" and must be removed when instructed to do so.
The last class of each month, dancers may wear their favorite leotard and skirt.

LEVEL 4 Classes (Apprentices)

Required Attire for Class

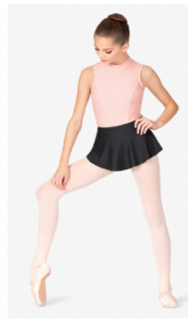


TEAL Theatrical Teens
Adjustable Strap Camisole
Dance Leotard Style No: D5100 or
Girls Camisole Dance
Leotard
Style: D5100C

SKIRT: Brand LULLI

COLOR: BLACK

Womens "Alisa" Pull-On
Mesh Dance Skirt
Style No: LUB295



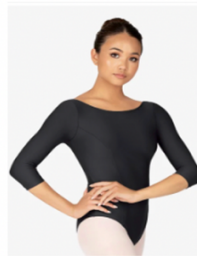
MARIIA CROWN

Women or Girls High Low Pull-On Skirt

Style No: ME635 (Women)

Style No: ME635C (Child Size)

COLOR BLACK



MARIIA CROWN

Women Boat Neck 3/4 Sleeve Leotard

Style No: ME634 (Adult size)

Style No: ME634C (Child Size)

COLOR BLACK

Ballet and Pointe Class Pink Tights (Seamed or Mock seamed for performance)

Ballet shoes, must be leather for performance, canvas for class is permissible.

Pointe Shoes-We RECOMMEND AND ENCOURAGE you get a proper fit and purchase at
Dance Etc. in Raleigh, NC (ONLY WHEN told by their instructor that they are ready for Pointe shoes!)

Modern Class-they may wear long or short sleeve, snug fitting shirt and black tights. Socks are recommended for some of the
technique.

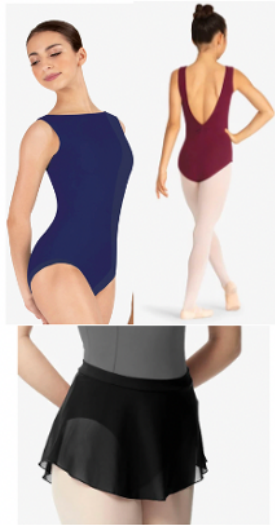
Tap Shoes are the black oxfords (slip on or lace up are acceptable.) They may wear black tights, shorts or t-shirts (that are
appropriate for dance).

Jazz Shoes Tan Slip-on or lace up. Jazz students may wear black tights, but no shorts or t-shirts during class.



Any warm-ups must be "Dance Warm-ups" and must be removed when instructed to do so. Dancers may wear any black leotard on
Thursday, but must own the ¾ sleeve for performances or special lessons and showcases or pictures. The last class of each month,
dancers may wear their favorite leotard and skirt.

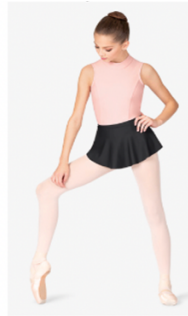
LEVEL 5 Classes (Company) Required Attire for Class



LEOTARD: BURGUNDY

Womens Cotton Pinched V-Back Tank Leotard style No:
TH5556

SKIRT: BLACK LULLI Womens
"Alisa" Pull-On Mesh style No:
LUB295



MARIA CROWN

Women or Girls High Low Pull-On Skirt
Style No: ME635 (**Women**)
Style No: ME635C (Child Size)
COLOR BLACK



MARIA CROWN

Women Boat Neck 3/4 Sleeve Leotard
Style No: ME634 (Adult size)
Style No: ME634C (Child Size)
COLOR BLACK

Ballet and Pointe Class Pink Tights (Seamed or Mock seamed for performance)

Ballet shoes, must be leather for performance, canvas for class is permissible.

Pointe Shoes-We RECOMMEND AND ENCOURAGE you get a proper fit and purchase at
Dance Etc. in Raleigh, NC

Modern Class-they may wear long or short sleeve, snug fitting shirt and black tights. Socks are recommended for some of the technique.

Tap Shoes are the black oxfords (slip on or lace up are acceptable.) They may wear black tights, shorts or t-shirts (that are appropriate for dance).

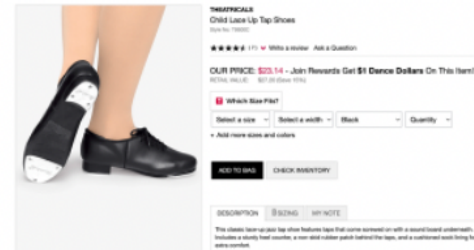
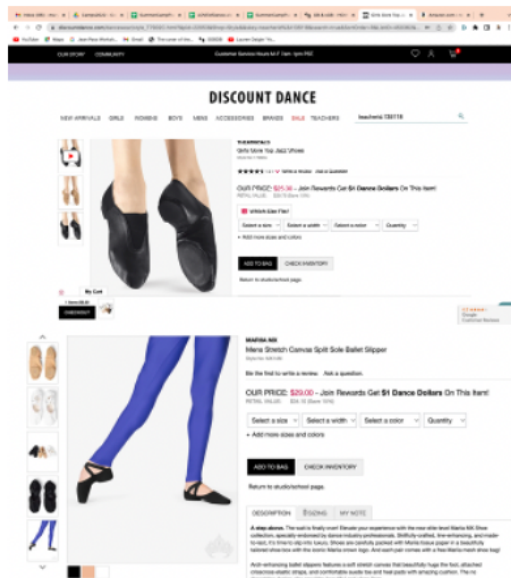
Jazz Shoes Tan Slip-on or lace up. Jazz students may wear black tights, but no shorts or t-shirts during class.



Any warm-ups must be "Dance Warm-ups" and must be removed when instructed to do so. Dancers may wear any black leotard on Wednesday, but must own the ¾ sleeve for performances or special lessons and showcases or pictures. The last class of each month, dancers may wear their favorite leotard and skirt

Boys. Required Attire for Class

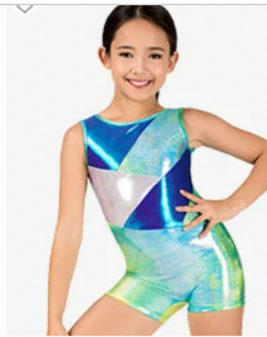
Black Pants or Shorts with a Black or White Tshirt



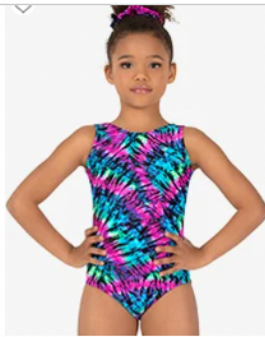
Ballet, Tap and Jazz
shoes should be Black,
here is are examples of
good styles

Gymnastics Attire

Students must wear athletic ware that they can go upside down in and the clothes DO NOT come up. Leotard and shorts, leotard and athletic leggings, a “bike short” style unitard, or a unitard are all acceptable.



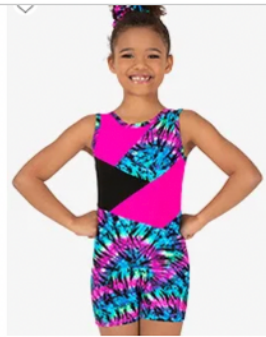
Perfect Balance Girls Gymnastics
Glitter Print Tank Shorty Unitard
\$26.51



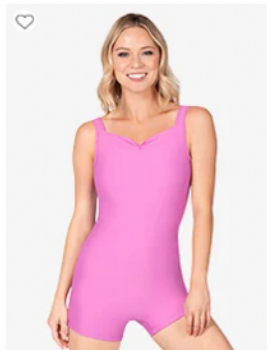
Perfect Balance Girls Gymnastics
Neon Tie-Dye Tank Leotard
\$34.01



Perfect Balance Child Basic Velvet
Tank Leotard
\$23.03



Perfect Balance Girls Gymnastics
Neon Tie-Dye Tank Shorty Unitard
\$41.40



Marila Crown Womens Pinch Front
Tank Biketard
\$34.50



Gymnastics Attire

Students must wear athletic ware that they can go upside down in and the clothes DO NOT come up. Leotard and shorts, leotard and athletic leggings, a “bike short” style unitard, or a unitard are all acceptable.